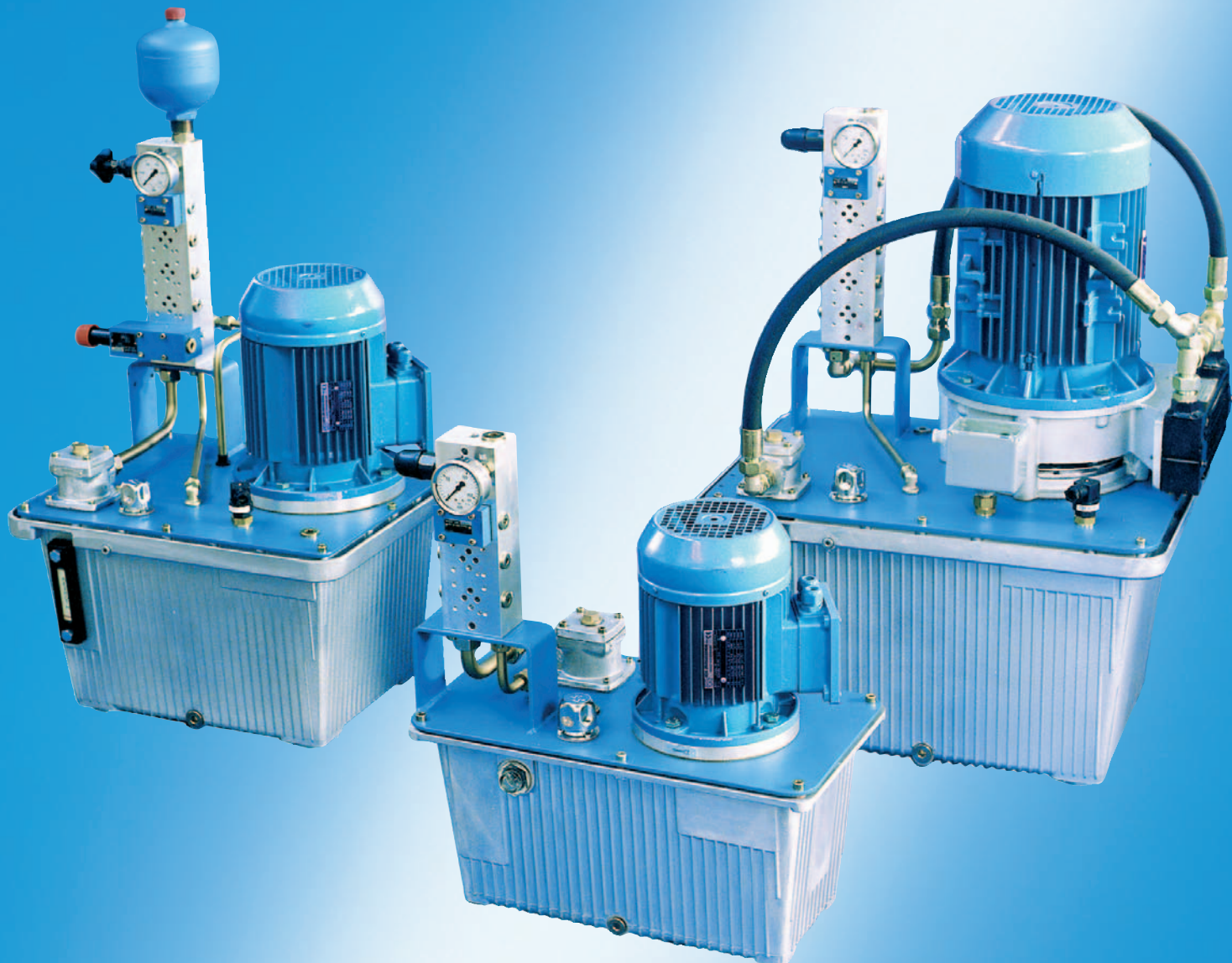


# Premium Quality Modular Power Units - Cost Effective & Express Delivery

The Drive & Control Company

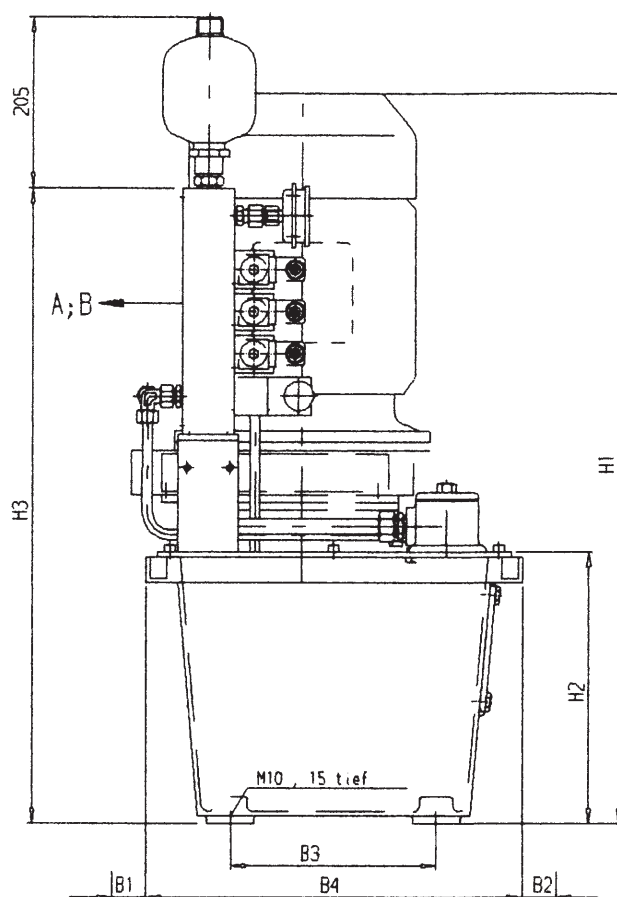
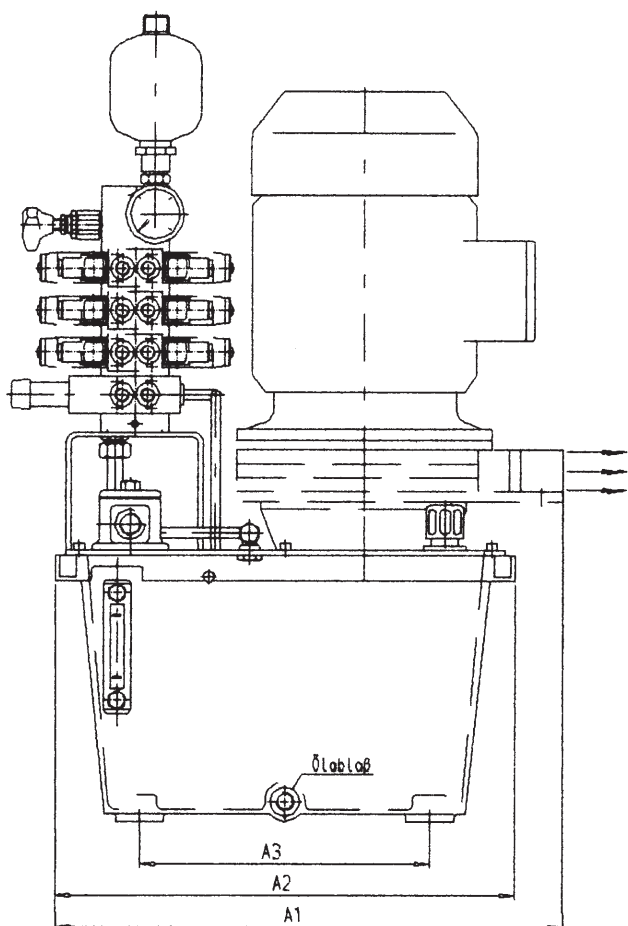


## Dimensions (in mm)

Motor Size	Reservoir								
	20			40			60		
	71	80/ 90	100	80/ 90	100	132	90	100	132
A1*	-	-	590	-	565	600	-	-	670
A2	520			540			645		
A3	400			341			422.5		
B1*	50			60			30		
B2*	60			30			20		
B3	150			241			282.5		
B4	290			440			505		
H1*	520	520/560	600	580/625	660/680	755	675	710	805
H1	-	-/620	680	-/685	740/760	865	735	790	915
H2	260			321			373		

### Dimensions H3 in mm

Option of controller stations	20	40	60
1	515	605	655
2	565	655	705
3	615	705	755
4	665	755	805
5	715	805	855
6	765	855	905
8	815	905	955



# Features

- Robust aluminium reservoirs
- 20, 40, and 60 litre capacity
- Flow from 2.9l/min - 23.2 l/min
- Power from 0.37kw - 7.5kw pressures up to 315 bar max
- Incorporating Rexroth components
- Compact power unit design
- Low noise
- Maintenance friendly design
- Warranty available up to 3 years

# What is included?

The basic power unit comprises of: -

- Aluminum reservoir
- Motor pump module
- *Optional* oil cooler
- Manifolds from 1 - 8 station
- Reservoir accessories

## Modular Power Units

### - 4 Simple Steps to Order

#### Step 1-

From table 1, 2 or 3, select the basic power unit you need, based on the reservoir size, flow and pressure required. There is also the option to add a bell housing mounted cooler.

#### Step 2 -

Select the Control Manifold option required based on pressure and number of stations from Table 4.

#### Step 3 -

Select options from Table 5, if required.

#### Step 4 -

Complete Table 6, showing the valve types and positions if required, or contact your local Rexroth representative for assistance.

*Follow the four steps and note the part numbers in the boxes below: -*

Basic Power Unit

+

Control Manifold Option

+

Options - Table 5  
Options - Table 5  
Options - Table 5

**TABLE 1 - Selection of basic power units with a size 20 reservoir**

Pump	$q_{v \max}$ at 1450 min <sup>-1</sup> in L/min	$p_{\max}$ in bar	Power at 50 Hz in kW	Motor frame size	Part No. without oil cooler	Weight in kg	Part No. with oil cooler	Weight in kg
PLP 10.2	2.9	60	0.37	71-4-A1	R900939337	30	–	–
		125	0.75	80-4-A1	R900939338	34	–	–
		250	1.5	90L-4-A1	R900939339	40	R900939435	43
PLP 10.3,15	4.5	40	0.37	71-4-A1	R900939340	30	–	–
		80	0.75	80-4-A1	R900939341	34	–	–
		160	1.5	90L-4-A1	R900939342	40	R900939436	43
		235	2.2	100L-4-A0	R900939343	49	R900939437	52
G2-004	5.8	25	0.37	71-4-A1	R900938914	30	–	–
		60	0.75	80-4-A1	R900938916	34	–	–
		120	1.5	90L-4-A1	R900938926	40	R900939438	43
		250	3	100L-4-A1	R900938927	49	R900939439	52
G2-005	7.9	50	0.75	80-4-A1	R900938928	34	–	–
		90	1.5	90L-4-A1	R900938929	40	R900939440	43
		185	3	100L-4-A1	R900938930	49	R900939441	52
		250	4	112M-4-B0	R900938931	56	R900939442	59
G2-008	11.8	55	1.5	90L-4-A1	R900938932	40	R900939443	43
		120	3	100L-4-A1	R900938934	49	R900939444	52
		160	4	112M-4-B0	R900938935	56	R900939445	59
R4-1.6-700	2.1	315	1.5	90L-4-A1	R900938938	44	R900939446	47
R4-3.15-500	4.8	300	3	100L-4-A1	R900938939	54	R900939447	57

**TABLE 2 - Selection of basic power units with a size 40 reservoir**

Pump	$q_{v \max}$ at 1450 min <sup>-1</sup> in L/min	$p_{\max}$ in bar	Power at 50Hz in kW	Motor frame size	Part No. without oil cooler	Weight in kg	Part No. with oil cooler	Weight in kg
PLP 10.2	2.9	125	0.75	80-4-A1	R900939375	39	–	–
		250	1.5	90L-4-A1	R900939376	45	R900939448	48
PLP 10.3,15	4.5	160	1.5	90L-4-A1	R900939377	45	R900939449	48
		235	2.2	100L-4-A0	R900939381	54	R900939450	57
G2-004	5.8	120	1.5	90L-4-A1	R900939382	45	R900939451	48
		250	3	100L-4-A1	R900939383	54	R900939452	57
G2-005	7.9	90	1.5	90L-4-A1	R900939384	45	R900939453	48
		185	3	100L-4-A1	R900939385	54	R900939454	57
		250	4	112M-4-B0	R900939386	59	R900939455	62
G2-008	11.8	55	1.5	90L-4-A1	R900939387	45	R900939456	48
		120	3	100L-4-A1	R900939388	54	R900939457	57
		230	5.5	132S-4-B0	R900939389	71	R900939458	75
GF2-011	16	95	3	100L-4-A1	R900939395	56	R900939459	59
		130	4	112M-4-B0	R900939396	61	R900939461	64
		175	5.5	132S-4-B0	R900939397	73	R900939462	77
		210	7.5	132M-4-B1	R900939398	87	R900939464	91
R4-1.6-700	2.1	315	1.5	90L-4-A1	R900939390	49	R900939465	52
R4-3.15-500	4.8	300	3	100L-4-A1	R900939391	59	R900939466	62
R4-6.3-500	8.3	315	5.5	132S-4-B0	R900939392	77	R900939467	81
R4-8.0-500	11.4	315	7.5	132M-4-B1	R900939394	93	R900939468	97

**TABLE 3 - Selection of basic power units with a size 60 reservoir**

Pump	$q_{v \max}$ at 1450 min <sup>-1</sup> in L/min	$p_{\max}$ in bar	Power at 50 Hz in kW	Motor frame size	Part No. without oil cooler	Weight in kg	Part No. with oil cooler	Weight in kg
G2-004	5.8	120	1.5	90L-4-A1	R900939404	55	R900939478	58
		250	3	100L-4-A1	R900939416	64	R900939479	67
G2-005	7.9	90	1.5	90L-4-A1	R900939417	55	R900939480	58
		185	3	100L-4-A1	R900939418	64	R900939482	67
		250	4	112M-4-B0	R900939419	69	R900939483	72
G2-008	11.8	55	1.5	90L-4-A1	R900939420	55	R900939484	58
		120	3	100L-4-A1	R900939421	64	R900939485	67
		230	5.5	132S-4-B0	R900939422	81	R900939486	85
GF2-011	16	95	3	100L-4-A1	R900939424	66	R900939487	69
		130	4	112M-4-B0	R900939425	71	R900939488	74
		175	5.5	132S-4-B0	R900939427	83	R900939489	87
		210	7.5	132M-4-B1	R900939428	97	R900939490	101
GF2-016	23.2	90	4	112M-4-B0	R900939430	71	R900939491	74
		120	5.5	132S-4-B0	R900939431	83	R900939492	87
		165	7.5	132M-4-B1	R900939432	97	R900939493	101
R4-3,15-500	4.8	300	3	100L-4-A1	R900939423	69	R900939494	72
R4-6.3-500	8.3	315	5.5	132S-4-B0	R900939433	87	R900939495	91
R4-8.0-500	11.4	315	7.5	132M-4-B1	R900939434	103	R900939496	107

**TABLE 4 - Selection of control manifolds**

Version 6 – Manifold mounting block complete with pressure gauge and pressure relief valve.

Version 7 – As per Version 6 with additional accumulator and unload valve.

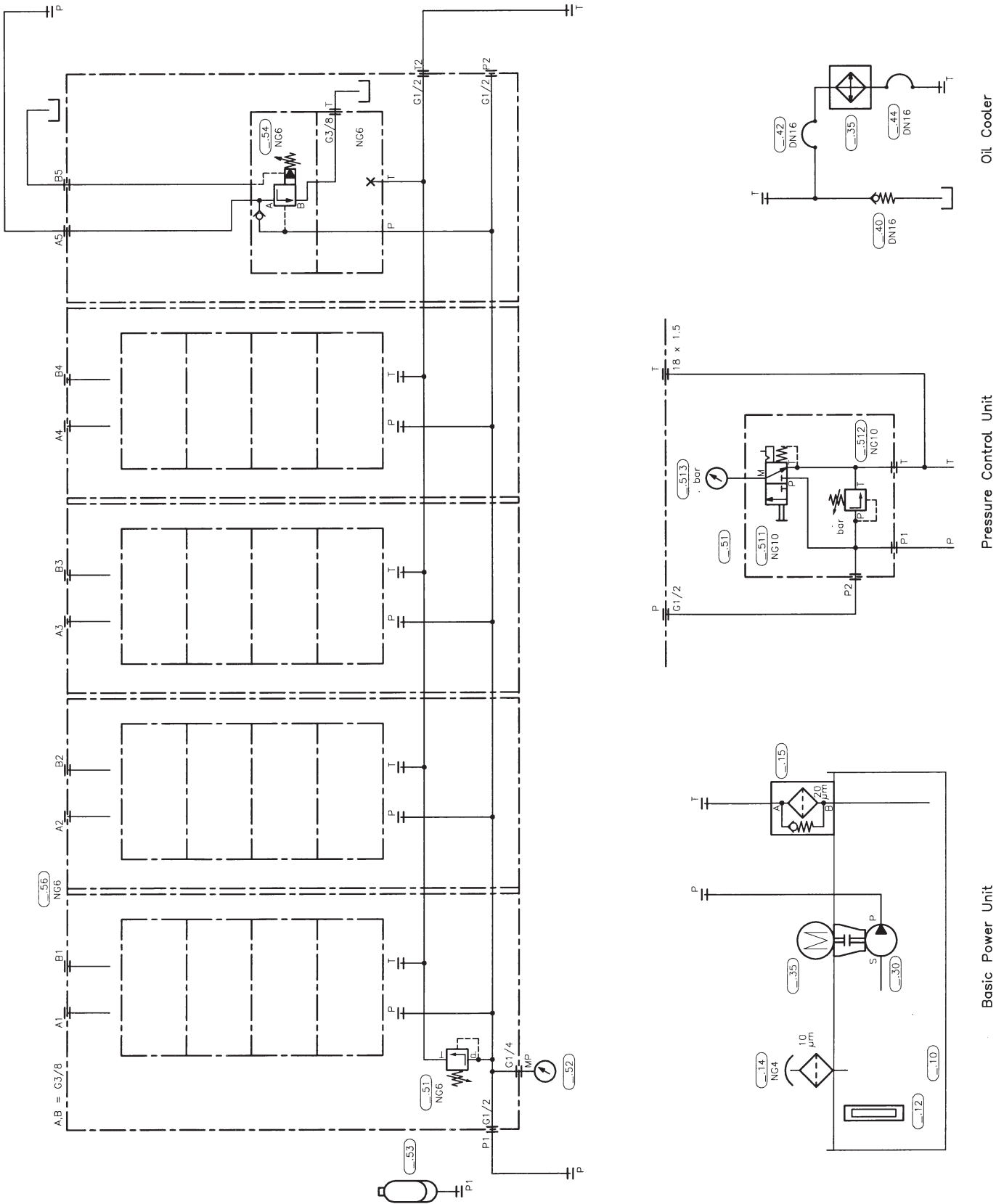
No. of Stations	Version 6				Version 7		
	50	100	200	315	100	200	315
1	R900868291	R900867747	R900867748	R900867749	R900867597	R900867598	R900867599
2	R900868317	R900868009	R900868017	R900868024	R900867962	R900867969	R900867977
3	R900868318	R900868010	R900868018	R900868025	R900867963	R900867970	R900867978
4	R900868319	R900868011	R900868019	R900868026	R900867964	R900867971	R900867979
5	R900868320	R900868013	R900868020	R900868027	R900867965	R900867972	R900867980
6	R900868321	R900868014	R900868021	R900868028	R900867966	R900867973	R900867981
7	R900868322	R900868015	R900868022	R900868029	R900867967	R900867974	R900867982
8	R900868323	R900868016	R900868023	R900868030	R900867968	R900867975	R900867983

**TABLE 5 - Selection of options**

Size of reservoir		20	40	60
Clogging indicator	Optical	R900229636		
	Electrical	R900229637		
Level switch	1 contact	R900003306	R900035552	R900035552
	1 contact/thermostat	R900085624	R900085625	
Drip tray		R900219725	R900219726	R900219729
Feet (4 off)			R900002096	R900002096
Hand pump, total			R900052363	R900058375
Thermostat	1 controller		R900020588	R900020588
	2 controllers		R900013645	R900013645

# TABLE 6 -Standard Hydraulic Circuits

- Please use this sheet for your circuit sketch. Please take into account the standard circuits to RE51 013.
- Only 4 stations shown below for space reasons - for up to 8 stations photocopy this page and add more valve positions
- Our sales organisation is able to offer assistance in the design of the hydraulic circuit.



## Technical data

Please consult us for applications outside the following parameters.

Reservoir capacity	L 20; 40; 60	
Pipe connections	Connection thread to ISO 1179 (DIN 3852-2 Form X) or pipe connection to ISO 8434 part 1	
Pressure fluid	Mineral oil HLP to DIN 51 524 part 2, ISO VG 46. Please take our specifications in catalogue sheet RE 07 075 into account!	
Return filter	ABZFR-S0050-10-1X/M-B	
Filter rating	Air/breather filter $\mu\text{m}$	10
	Return filter $\mu\text{m}$	10
Viscosity range with pump type:	G2/4X GF2 $\text{mm}^2/\text{s}$	10 to 300
	R4 $\text{mm}^2/\text{s}$	10 to 200
	PLP $\text{mm}^2/\text{s}$	12 to 100
Cleanliness class to ISO code	Maximum permissible degree of contamination of the pressure fluid is to ISO 4406 (C) dependent on the requirements of the entire hydraulic system <sup>1)</sup>	
Electric motor	Current type	AC asynchronous motor
	Voltage	230/400 V 50 Hz 460 V 60 Hz or 400/690 V 50 Hz 460 V 60 Hz to IEC 38
	No. of poles	4
	Protection	IP55
Oil/air cooler	Type	PTK to catalogue sheet RE 50 092
	Operating pressure, max. bar	16
Type of pipe work	Double edge cutting ring to ISO 8434 part 1 (DIN 2353) light/heavy series	
Surface treatment:	1st undercoat	All steel parts undercoated with zinc dust paint
	2nd undercoat	All steel parts undercoated with Epoxy RAL 5009
	Pipes	Fe/Zn8C
	Components	Undercoated as delivered by the manufacturer
	Reservoir	No surface treatment

<sup>1)</sup> The cleanliness class stated for the components must be adhered too in hydraulic systems. Effective filtration prevents faults from occurring and at the same time increases the component service life. For the selection of filters see catalogue sheets RE 50 070, RE 50 076 and RE 50 081.

For assembly, commissioning and the maintenance of oil hydraulic systems, please take the details stated within catalogue sheet RE 07 900 into account! The power units have been designed & manufactured in accordance with the harmonised EN standards/specifications.

Heat loss calculation:

Reservoir in litres	Surface area with cover in $\text{m}^2$	Heat loss $\rho_{30}$ in kW	Specific heat loss in $\text{kW}/^\circ\text{C}$
20	0.5	0.17	0.0055
40	1.0	0.35	0.0117
60	1.3	0.45	0.015

Bosch Rexroth Limited  
Hydraulics  
Cromwell Road,  
St. Neots,  
Cambs, PE19 2ES  
Tel: 01480 223265  
Fax: 01480 406106  
Email: [sales@boschrexroth.co.uk](mailto:sales@boschrexroth.co.uk)  
[www.boschrexroth.co.uk](http://www.boschrexroth.co.uk)

Bosch Rexroth Limited  
Unit 23,  
Queensbrook,  
Spa Road,  
Bolton, BL1 4AY  
Tel: 01204 534083  
[www.boschrexroth.co.uk](http://www.boschrexroth.co.uk)

Bosch Rexroth Limited  
Hydraulics  
Broadway Lane,  
South Cerney,  
Circencester, GL7 5UH  
Tel: 01285 863000  
[www.boschrexroth.co.uk](http://www.boschrexroth.co.uk)

Bosch Rexroth Limited  
Unit 1a,  
Station Court,  
Guiseley,  
West Yorkshire, LS20 8EY  
Tel: 01943 882388  
[www.boschrexroth.co.uk](http://www.boschrexroth.co.uk)

Bosch Rexroth Limited  
Viewfield,  
Glenrothes,  
Fife, KY6 2RD  
Tel: 01592 631777  
[www.boschrexroth.co.uk](http://www.boschrexroth.co.uk)

Bosch Rexroth Limited  
Unit 8,  
Parkland Ind. Estate,  
East Moors Road,  
Cardiff, CF24 5JP  
Tel: 02920 465677  
[www.boschrexroth.co.uk](http://www.boschrexroth.co.uk)

Bosch Rexroth Limited  
Meridian South,  
Meridian Business Park,  
Brounstone,  
Leicester, LE19 1WY  
Tel: 0116 281 4488  
[www.boschrexroth.co.uk](http://www.boschrexroth.co.uk)