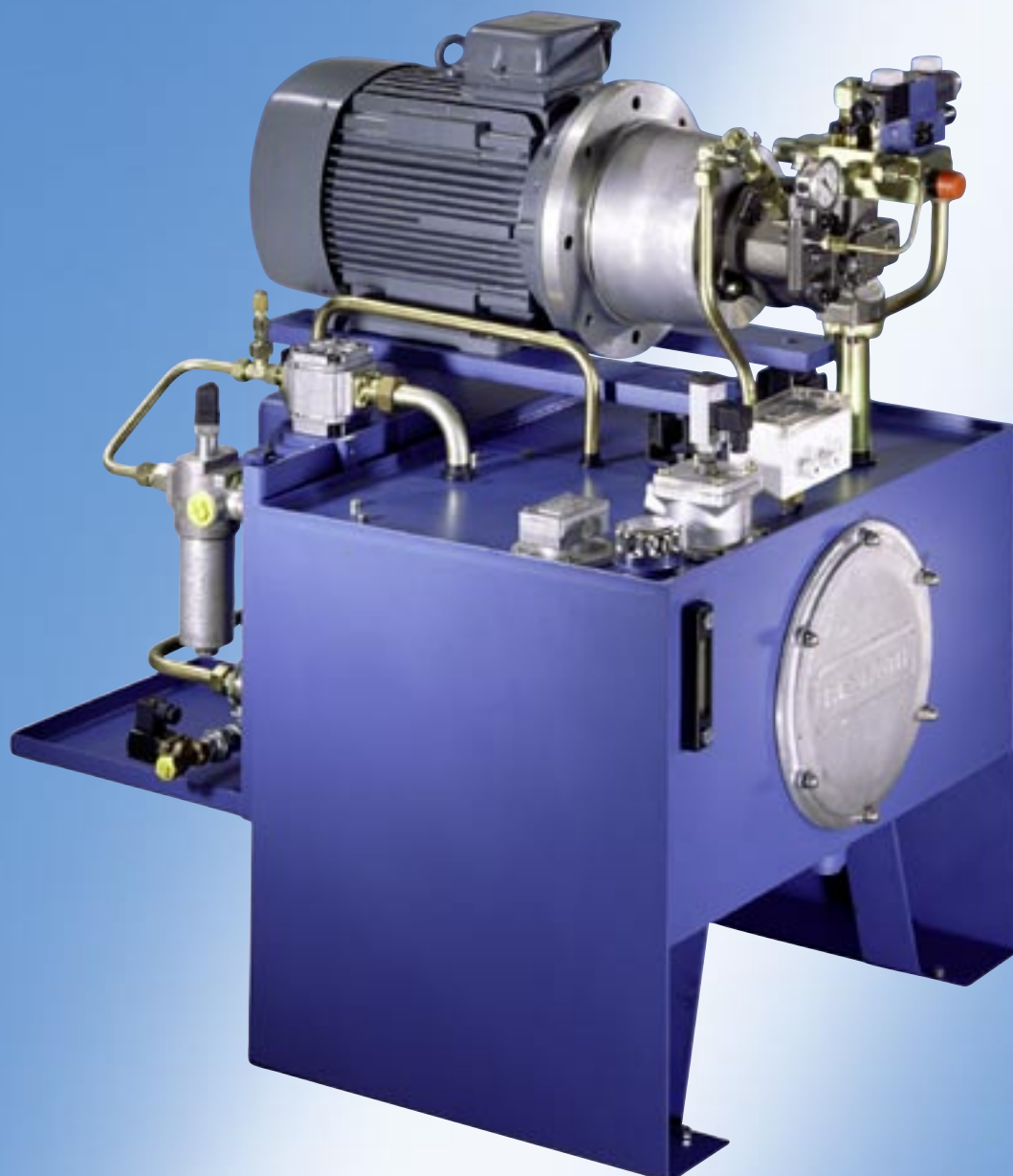


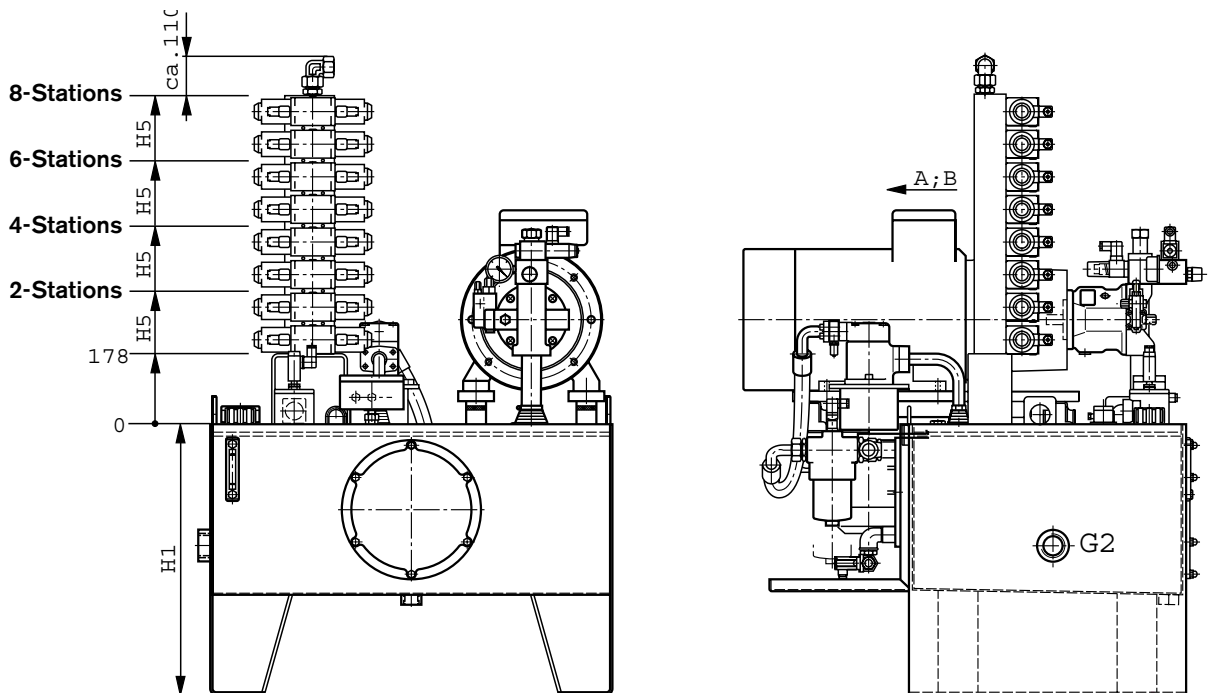
Premium Quality Modular Power Units Cost Effective & Express Delivery

The Drive & Control Company



Unit dimensions (Dimensions in mm)

Reservoir Size [l]	No. of pump motor assemblies	Pump NS	Electric Motor BS	L1	L2	L3	L4	L5	L6	B1	B2	B3	B4	B5	B6	H1	H2	H3	H4															
100	1	18	132S	393	633	120	160	-	475	360	460	805	50	111	103	660	684	1040	1050															
			132M																															
160	1	28	132M	570	808	119	200	-	615	490	590	890	50	145	130	660	694	1060	1070															
			160M									1020						1120	1130															
			160L																															
250	1	45	160L	770	1008	119	210	-	805	590	690	1050	50	155	112	680	714	1150	1160															
			180M									1120						1170	1220															
			180L																															
400	1	71	180L	1274	1512	119	255	-	1255	635	735	1180	50	230	142	680	743	1190	1220															
			200L									1230						1250	1310															
			225S									1290						1270	1360															
	2	45	160L																				1150	1160										
			180M								815	1295			1180																			
			180L																						1170	1220								
630	1	100	200L	1274	1512	119	245	-	1215	845	945	1340	50	230	142	770	833	1360	1400															
			225S																															
			225M																															
	2	71	180L																															
			200L										700	1265																				
			225S																	1360	1450													



Dim. H5

Number of stations	Standard CETOP 3	Standard CETOP 5
2	298	335
4	408	499
6	518	663
8	628	827

Features

- Robust steel reservoirs
- 100, 160, 250, 400 and 630 litre capacity
- Flow from 26 l/min - 145 l/min
- Power from 5.5kw - 45kw
- Pressures up to 250 bar continuous
- Incorporating Rexroth components
- Compact power unit design
- Low noise
- Maintenance friendly design
- Warranty available up to 3 years

What is included?

The basic power unit comprises of: -

- Steel reservoir
- One or two Motor pump assemblies
- Oil cooler
- Manifolds from 2 - 8 station
- Reservoir accessories

Modular Power Units

- 3 Simple Steps to Order

Follow the steps and note the part numbers in the boxes below: -

Step 1-

From table 1, select the basic power unit you need, based on the reservoir size, flow and pressure required. There is also the option to add a bell housing mounted cooler.

+

Step 2 -

Select the Control Manifold option required based on pressure and number of stations from Table 2.

Step 3 - Complete Table 3, showing the valve types and positions if required, or contact your local Rexroth representative for assistance.

Table 1 - Selection of basic Power Unit

Reservoir Size	No. of Pump motor assemblies	Pump type	$q_{v \max}$ in L/min	p_{\max} in bar	Elec. Motor		Cooling capacity in kW	Return filter NS	Part No.
					Power in kW	BS			
100	1	A10VSO18	26	100	5.5	132S	4	SO050	R901016328
				140	7.5	132M			R901016345
160	1	A10VSO28	40	90	7.5	132M	4	SO140	R901016347
				130	11	160M			R901016346
				180	15	160L			R901016348
250	1	A10SO45	65	110	15	160L	7,5		R901016349
				135	18.5	180M			R901016350
				160	22	180L			R901016351
400	1	A10VSO71	100	105	22	180L	11	SO450	R901016355
				145	30	200L			R901016352
				180	37	225S			R901016356
	2	A10VSO45	65	110	15	160L			R901016357
				135	18.5	180M			R901016358
				160	22	180L			R901016360
630	1	A10VSO100	145	100	30	200L	15		R901016363
				120	37	225S			R901016364
				150	45	225M			R901016366
	2	A10VSO71	100	105	22	180L		R901016371	
				145	30	200L		R901016372	
				180	37	225S		R901016373	

Table 2 - Selection of control manifolds

Number of stations	Standard manifold CETOP 3	Standard manifold CETOP 5
	Part number	
2	R900188031	R900196376
4	R900188033	R900196378
6	R900188035	R900196380
8	R900188037	R900856362

Connection thread

Ports	Pipe thread to ISO 228 part 1 (BSP)	
A; B	1/2"	3/4"
P; T	3/4"	1"
Gauge connections	1/4'	1/4"

Noise values for standard power units

Pressure in bar	Flow in L/min	Noise pressure level in dB(A)						
		Pump type A10VSO / NS					2x pump type A10VSO / NS	
100	$q_{v \min}$	71	73	72	74	75	75	77
	$q_{v \max}$	73	75	76	78	79	79	81
200	$q_{v \min}$	73	75	76	78	80	79	81
	$q_{v \max}$	75	77	78	81	84	81	84
300	$q_{v \min}$	76	77	77	79	82	80	82
	$q_{v \max}$	77	78	80	82	84	83	85

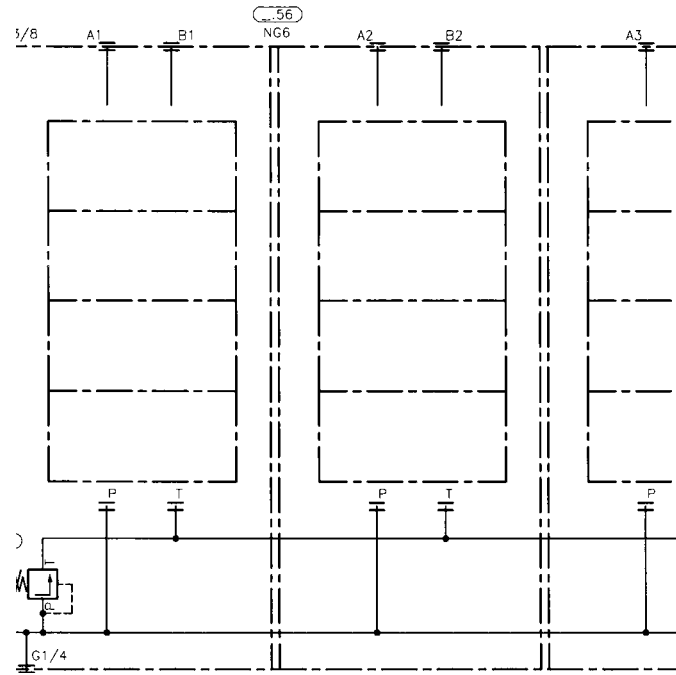
Noise pressure level
To DIN 45 635 parts 1 and 41
Measured at $n = 1450 \text{ min}^{-1}$, $v = 41 \text{ mm}^2/\text{s}$ and $\vartheta = 50 \text{ }^\circ\text{C}$
Distance of noise sensor to power unit: 1 m
Pressure fluid: mineral oil HLP to DIN 51 524 part 2
Please take into account!

The use of noise damping walls reduces the noise pressure level by approx. 10 to 15 dB(A).

Noise reflections at the final place of installation can lead to an increased noise pressure level.

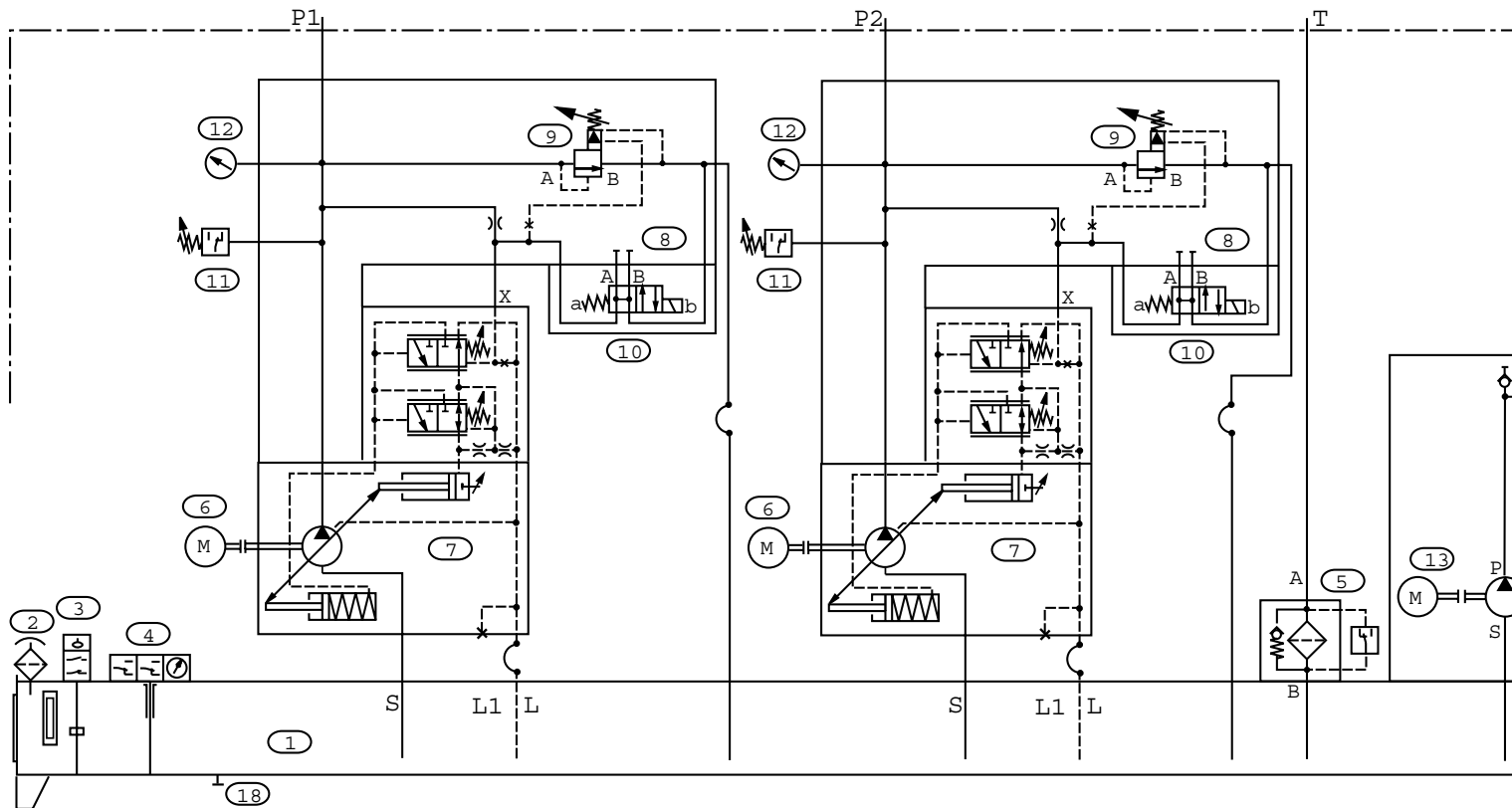
Table 3 - Standard Hydraulic Circuits

Please use this sheet for your circuit sketch.
Our sales organisation is able to offer assistance in the design of hydraulic circuits.

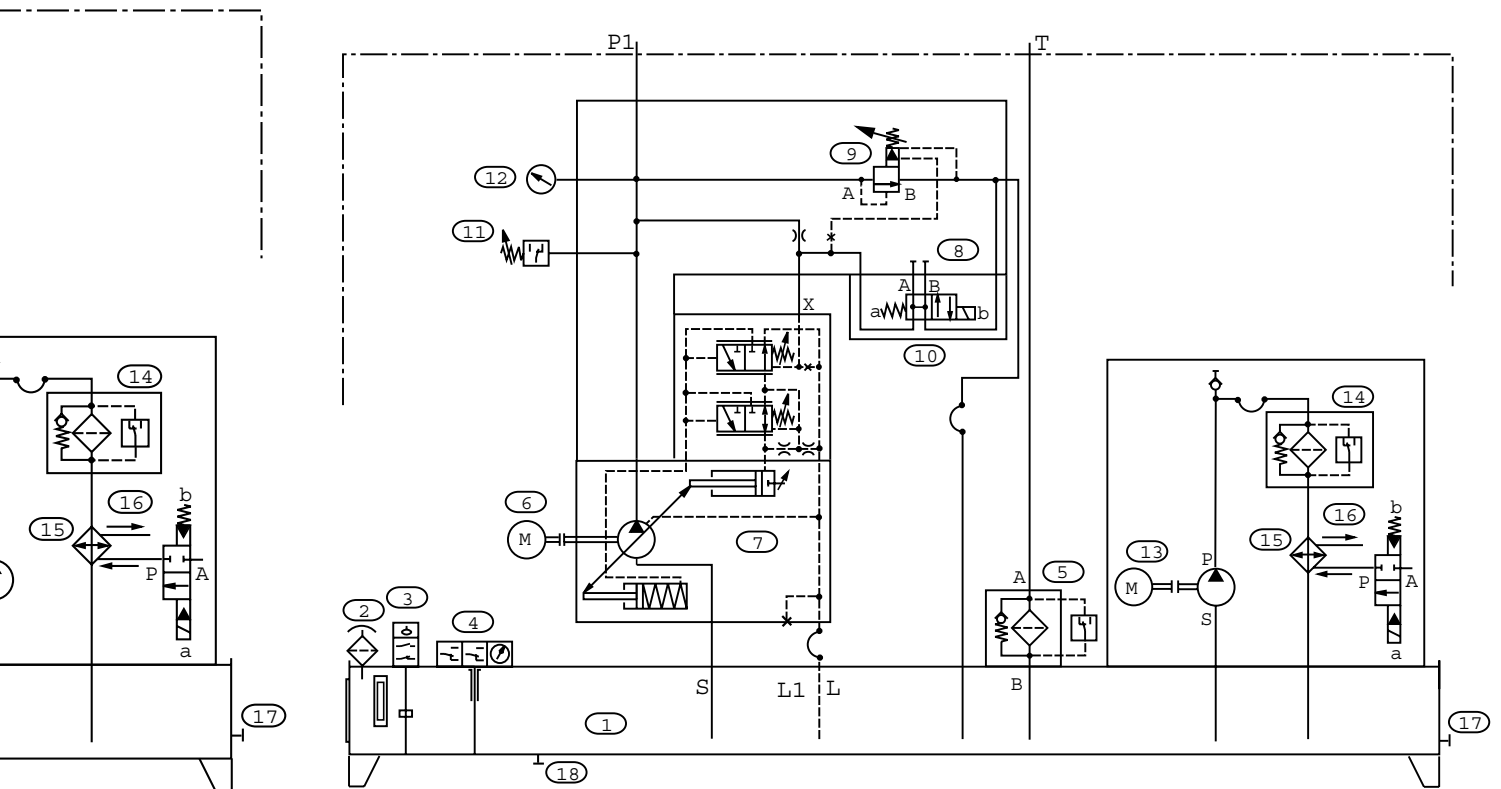
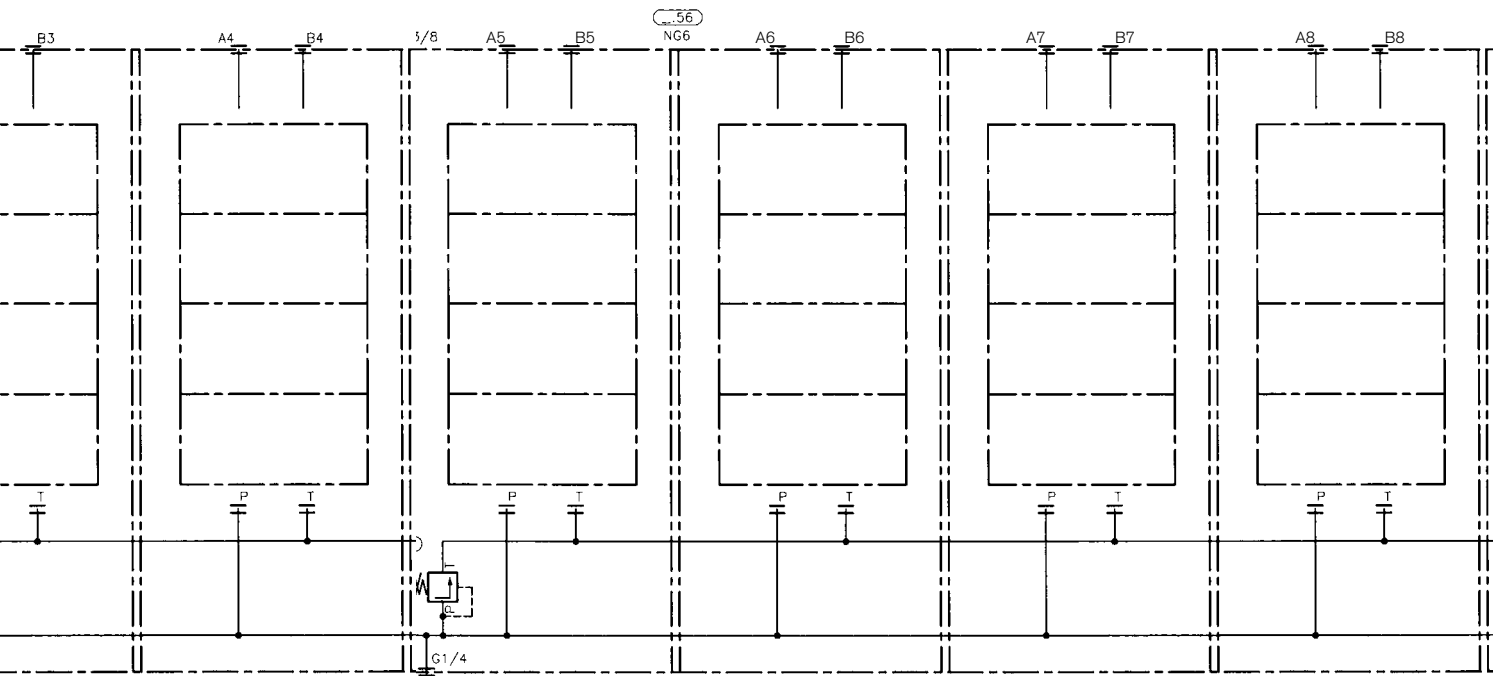


Parts list

- | | | |
|-------------------|-------------------------|---|
| 1 Fluid reservoir | 7 Axial piston pump | 13 Pump motor assembly |
| 2 Filler/breather | 8 Pump safety block | 14 In-line filter |
| 3 Float switch | 9 Pressure relief valve | 15 Oil/water cooler |
| 4 Thermostat | 10 Directional valve | 16 Solenoid actuated water controlvalve |
| 5 Return filter | 11 Pressure switch | 17 Heater connection |
| 6 Electric motor | 12 Pressure gauge | 18 Oil drain plug |



Circuit: Power Unit with two pump motor assemblies



Circuit: Power Unit with one pump motor assemblies

Technical data (for applications outside these parameters, please consult us!)

Pressure fluid	Mineral oil HLP to DIN 51 524 part 2 e.g. for an operating temperature of 50 °C ISO VG46 DIN 51 519 (other pressure fluids on request) Please take the specifications stated within catalogue sheet RE 07075 into account!				
Pump types	A10VSO18 to catalogue sheet RE 92712				
	A10VSO28 to 140 to catalogue sheet RE 92711				
Pump motor assembly	ABHPG to catalogue sheet RE 51068				
	ABAPG to catalogue sheet RE 51062				
Filter-cooler circulation module	ABUKG to catalogue sheet RE 50121				
Operating pressure, absolute	Inlet	$p_{\min-\max}$	bar	0.8 to 30	
	Outlet	p_{nom}	bar	250	
	Peak pressure	p_{max}	bar	315	
	Drain connection	$p_{\min-\max}$	bar	2	
Pressure fluid temperature range	ϑ	°C	– 25 to +80		
	The optimum operating temperature for the power unit when operating with mineral oil HLP to DIN 51 524 lies between 40 °C and 50 °C. During continuous operation the operating temperature should not exceed 70 °C!				
Cleanliness class to ISO code	Maximum permissible degree of contamination of the pressure fluid is to ISO 4406 (C) depending on the requirements of the entire hydraulic system ¹⁾				
Pressure safety	Pump safety block type DBA..., series 2X to catalogue sheet RE 25890 for variable displacement pumps type A10VSO				
Viscosity range	ν	mm ² /s	Optimum 16 to 36		
	ν	mm ² /s	Briefly 10 to 1000		
				(also see RE 92711 or RE 92712)	
Motor type				AC asynchronous motor	
	No. of pole pairs			4	
	Voltage	U	V	230 / 400 or 400 / 690 at 50 Hz	
		U	V	460 at 60 Hz to IEC 38	
	RPM	n	min ⁻¹	1500 to 50 Hz	
		n	min ⁻¹	1800 to 60 Hz	
	Protection				IP55
Direction of rotation				Anti-clockwise (viewed on the drive shaft)	
Filter rating	Filler/breather	µm	10		
	Return filter	µm	10		
Surface protection	Under coat: epoxy resin RAL 5010 for steel components				
Type of pipe work	Fittings to DIN 2353 light/heavy series, type Walform				

¹⁾ The cleanliness class stated for the components must be adhered too in hydraulic systems.
Effective filtration prevents faults from occurring and at the same time increases the component service life.
For the selection of filters see catalogue sheets RE 50070, RE 50076 and RE 50081.

Note:

For the assembly, commissioning and maintenance of hydraulic systems please take the standard AB01-01.02 into account
The units have been designed and manufactured in accordance with the harmonised EN standards / specifications.

Bosch Rexroth Limited
Hydraulics
15 Cromwell Road,
St. Neots, PE19 2ES
Tel: 01480 223265
Fax: 01480 406106
Email: sales@boschrexroth.co.uk
www.boschrexroth.co.uk

Bosch Rexroth Limited
Unit 23,
Queensbrook,
Spa Road,
Bolton, BL1 4AY
Tel: 01204 534083

Bosch Rexroth Limited
Hydraulics
Broadway Lane,
South Cerney,
Circencester, GL7 5UH
Tel: 01285 863000

Bosch Rexroth Limited
Unit 1a, Station Court,
Guiseley,
West Yorkshire, LS20 8EY
Tel: 01943 882388

Bosch Rexroth Limited
Viewfield,
Glenrothes,
Fife, KY6 2RD
Tel: 01592 631777

Bosch Rexroth Limited
Unit 8,
Parkland Ind. Estate,
East Moors Road,
Cardiff, CF24 5JP
Tel: 02920 465677

Bosch Rexroth Limited
Meridian South,
Meridian Business Park,
Brounstone,
Leicester, LE19 1WY
Tel: 0116 281 4488